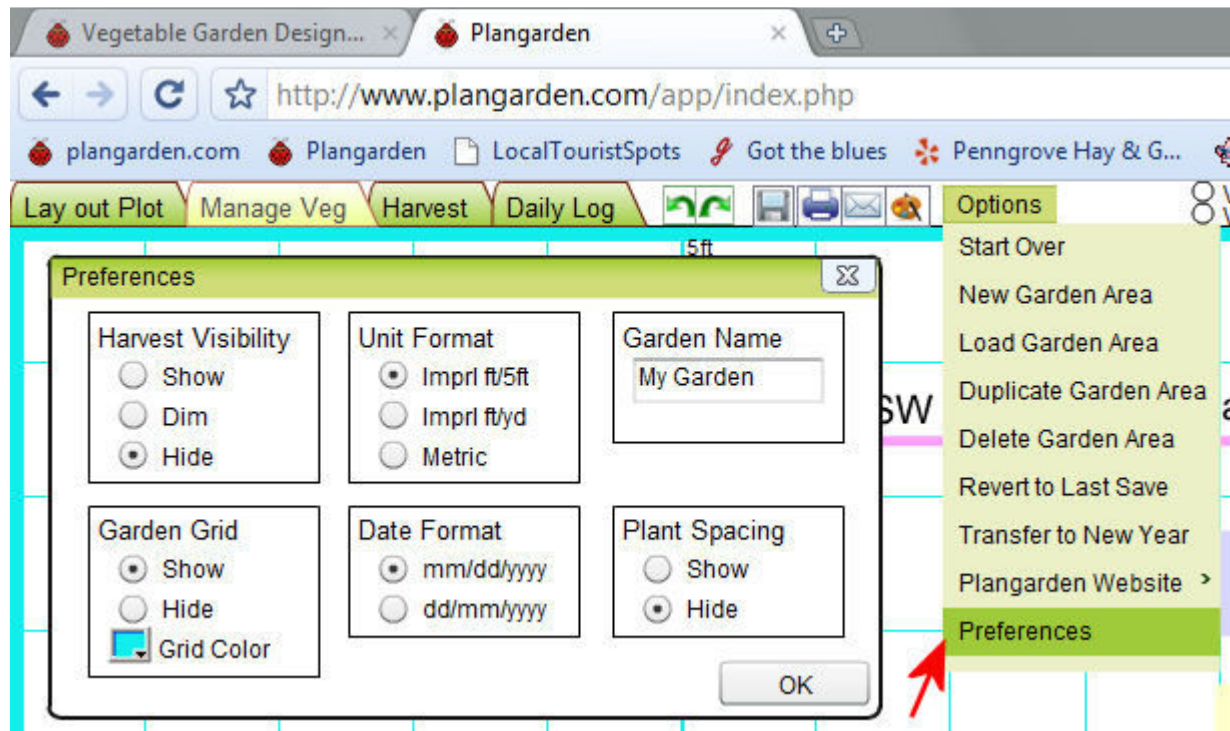


Setting Garden Preferences



- Click on the “Options” button at the top of the Plangarden screen. Select “Preferences”
- The “Preferences” box will appear. You have options to
 - Change the Harvest Visibility
 - Show or Hide the Garden Grid and change its color
 - Change units – imperial or metric
 - Change date format
 - Change your Garden Area name by typing over the old name
 - Show or Hide Plant Spacing
- Make sure you click on “OK”

Remember: Always SAVE your work before you proceed to do any changes to your garden plans.

